

CCS Technical Documentation

NPM-2NX Series Transceivers

Product Variants

Contents

	Page No
Foreword	3
Transceiver NPM-2NX (6340)	3
Exploded View of Transceiver NPM-2NX	4
Assembly Parts of NPM-2NX	5

Foreword

This section of the service manual contains specific details for the NPM-2NX handportable telephone variants.

The chapter contains an exploded view of the NPM-2NX variants including a list of assembly parts covering the system module and the display module.

Note: The Service Manual is intended for use by qualified service personnel only.

Note: When assembling the B-cover screws, use 17 Ncm torque.

Transceiver NPM-2NX (6340)

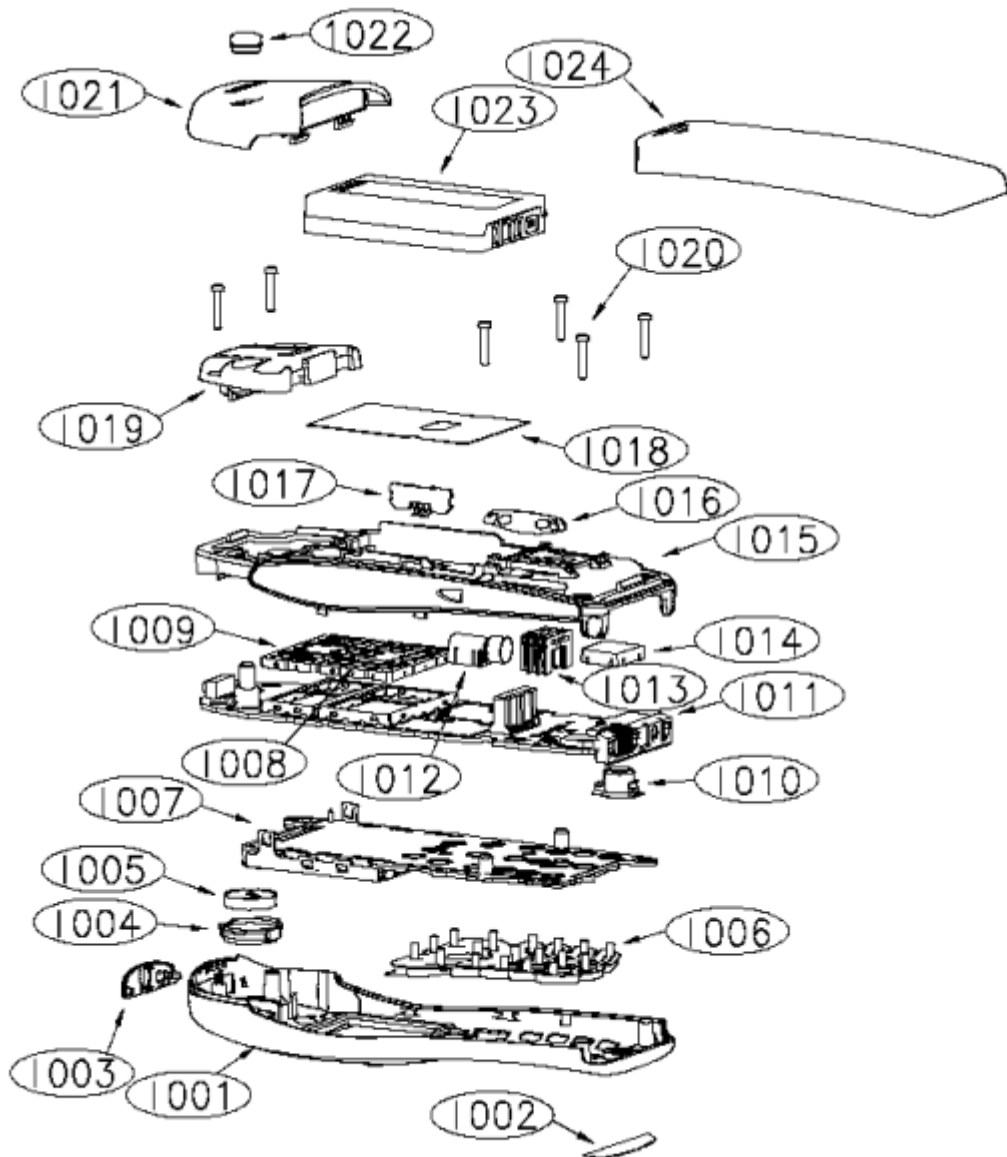
This phone is a dualband version designed for TDMA markets.

Unit/type	Product code	Description
Nokia Default DG	0507074	Nokia default settings (no SIM lock), Digital co-label, Dynamic Grey
Cingular DG	0507077	Cingular settings (SIM lock), Cingular Co-label, Dynamic Grey
Voice Stream DG	0507079	Voice Stream settings (SIM lock), Voice Stream Co-label, Dynamic Blue
Microcell Canade (bulk) DG	0507161	Microcell settings (SIM lock), Fido Co-label, Dynamic Grey
Telcel Mexico DG	0507380	Telcel settings (SIM lock), Digital Co-label, Dynamic Grey

Exploded View of Transceiver NPM-2NX

Note: Do not remove antenna from B-cover. Antenna and B-cover are provided as one unit.

Figure 1: Exploded view of NPM-2NX



Assembly Parts of NPM-2NX

Item	Qty	Product code	Description	Value, Type
I001	1	9458356 (Dynamic grey)	A-cover assembly	
I002	1	9370602	Nokia Default Co-label, jet black	
		9370614	Cingular Co-label	
		9370677	Voice Stream Co-label	
		9360667	Microcell Co-label	
I003	1	9451904	IR lens	
I004	1	9480637	Speaker gasket	
I005	1	5140067	Speaker	
I006	1	9794050	Keymat	
I007	1	4850141	LCD module	
I008	1	9510634	RF-shield RX lid	
I009	1	9510635	RF-shield TX lid	
I010	1	5140213	Microphone	
I011	1	5469061	System connector	
I012	1	6800053	Vibrator	
I013	1	5400169	SIM connector	
I014	1	5140229	Buzzer	
I015	1	9490234	D-cover assembly	
I016	1	9790501	Volume key	
I017	1	5219021	Volume switch	
I018	1	9370588	Type label	
I019	1	660235	Antenna	
I020	6	6290109	Screws	
I021	1	9451913	Antenna cover	
I022	1	9451139	Dust cap	
I023	1	670283	Battery BLB-3	
I024	1	9451912	Battery cover	

This page intentionally left blank.